

IS-Kanazawa 2012: The 9th International Conference on Testing and Design Methods for Deep Foundations

Content of Technical Exhibition

IS-Kanazawa 2012: The 9th International Conference on Testing and Design Methods for Deep Foundation will be held in Kanazawa, Japan, September 18-20, 2012. A Technical Exhibition will take place during the conference at the conference venue. The latest updated technologies relevant to pile foundation engineering, such as pile monitoring tools, foundation design programs, site investigation tools and so on, will be on display to our distinguished participants.

If you are interested in and would like to apply to this Technical Exhibition, please send the application form to the secretariat by E-mail. After receiving your application, the secretariat will send you the detailed procedure of the technical exhibition.

Please visit our web site for the details of IS-Kanazawa 2012 and the Technical Exhibition.

<http://is-kanazawa2012.jp/>

○**Venue** Kanazawa Bunka Hall (5-1 Takaoka-Machi, Kanazawa, Japan 920-0864))

○**Cost** 150,000 JPY of one booth

○**Period**

Preparation: 13:00 – 18:00 on 17th Sept. 2012

Exhibition : 13:00 – 18:00 on 18th Sept. 2012

10:00 – 18:00 on 19th Sept. 2012

10:00 – 14:30 on 20th Sept. 2012

○**Exhibition booth size** W2500mm×D2500mm×H2500mm

✂Refer to the next page for the shape and size of the exhibition booth

○**Notes**

- Power supply will be prepared (AC100V 500W, 2 outlets).
- The Internet connection will not be provided.
- Desks, chairs and lightning in the booth are prepared by the Organizing Committee. The exhibitor must prepare installation materials.
- The booth location in the hall will be assigned on the first-come-first-served basis.
- We are to close the list when the number of applicants reaches the quota.

○**Application** Please fill the application form and send it to the secretariat by Email. The email address is office@is-kanazawa2012.jp . The application form can be downloaded from our web site <http://is-kanazawa2012.jp/> .

○**Deadline of application** 31st July, 2012

< Secretariat >

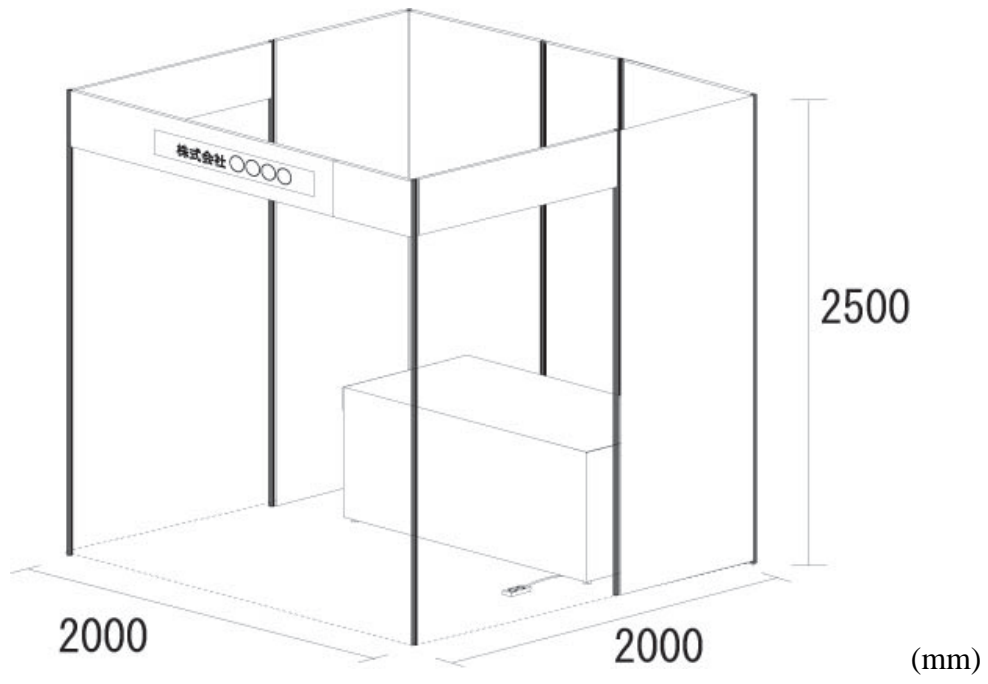
IS-Kanazawa 2012 Organizing Committee

Graduate School of Kanazawa University

2C-412, Kakuma-machi, Kanazawa, Ishikawa, 920-1192, Japan

Tel +81 (0) 76-234-4625 Email office@is-kanazawa2012.jp

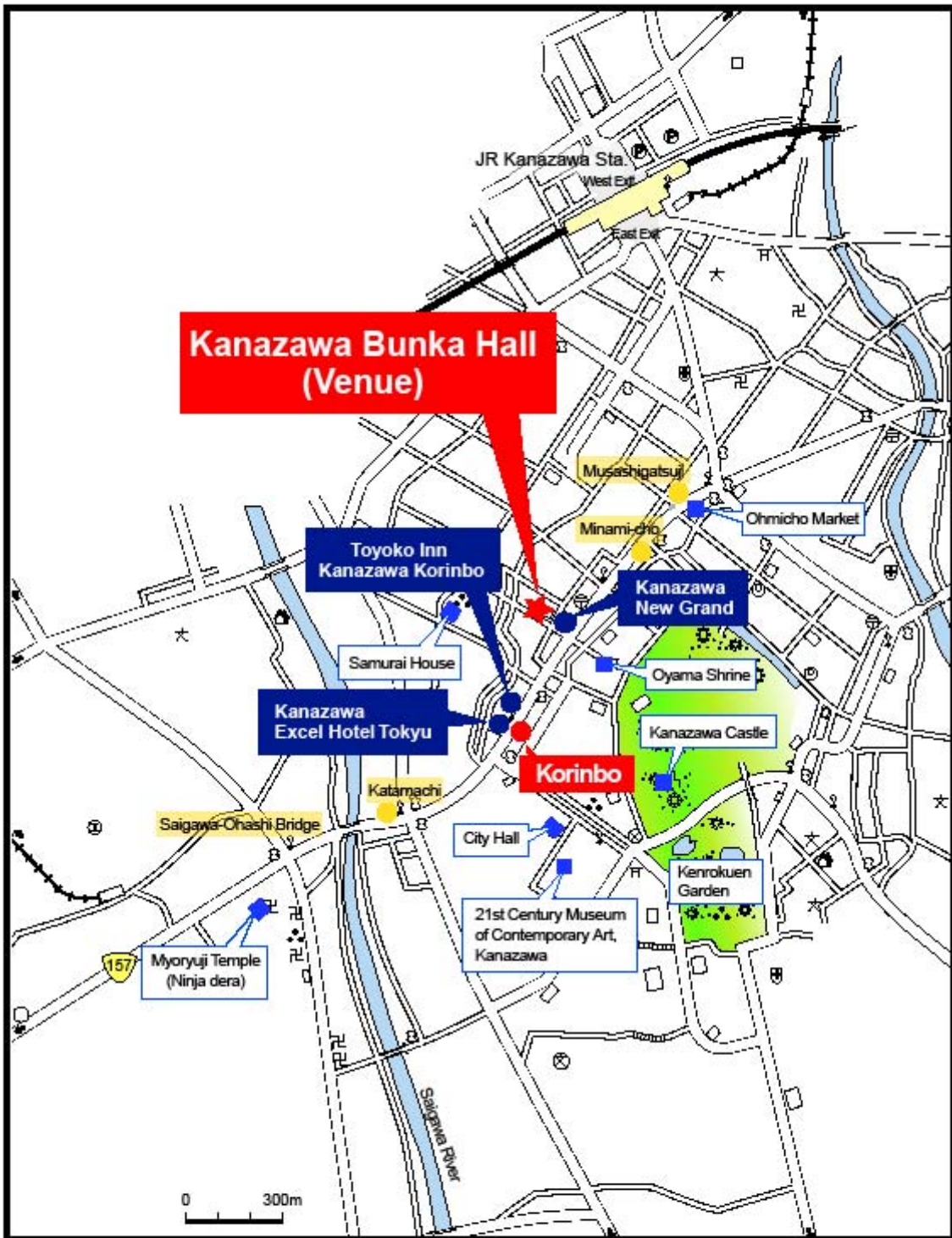
Booth



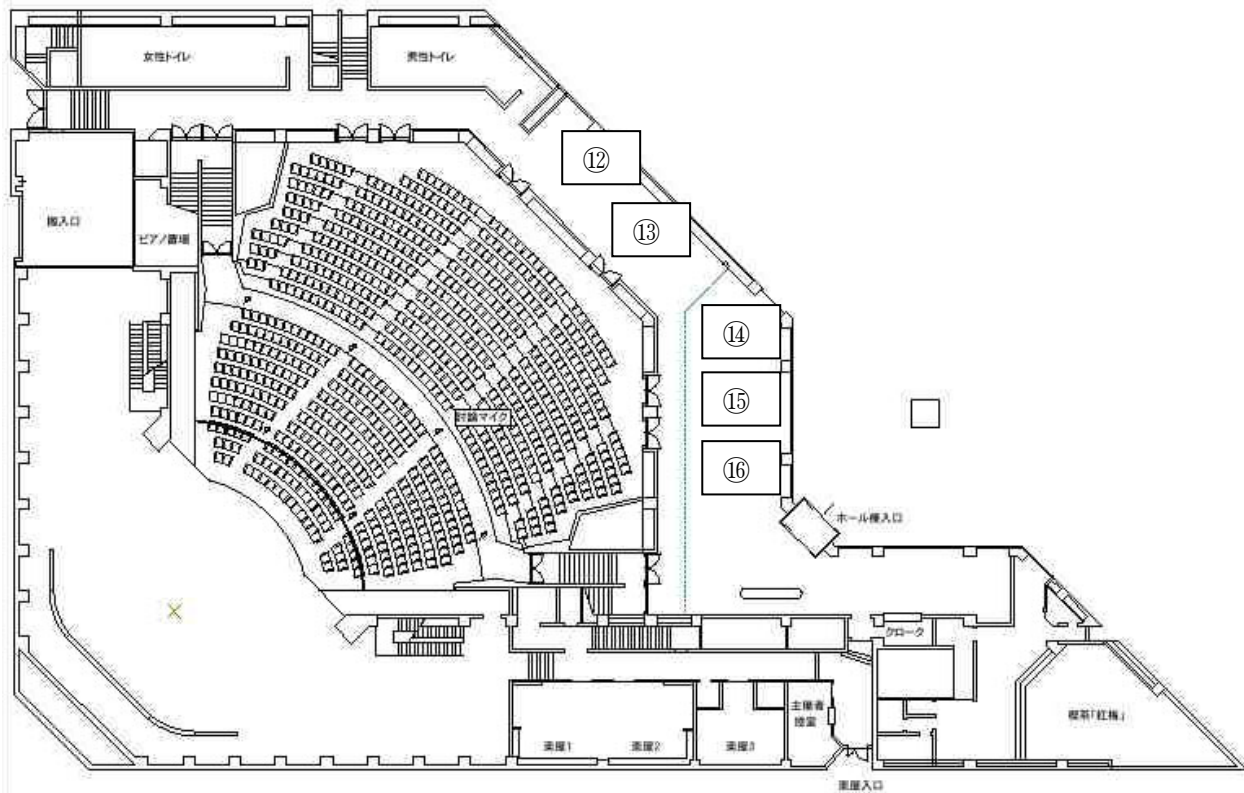
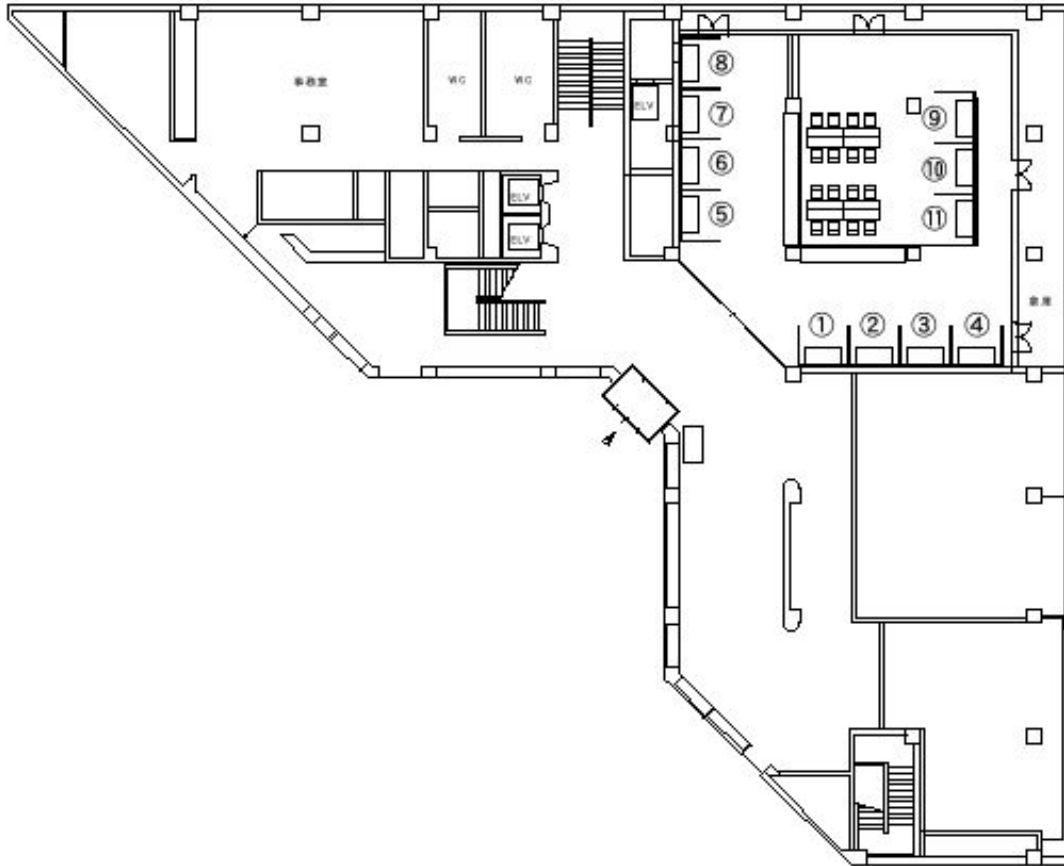
Place (Kanazawa Bunka Hall)



Map



Location of booths



N.B. Location of booths may be altered according to the number of booths.